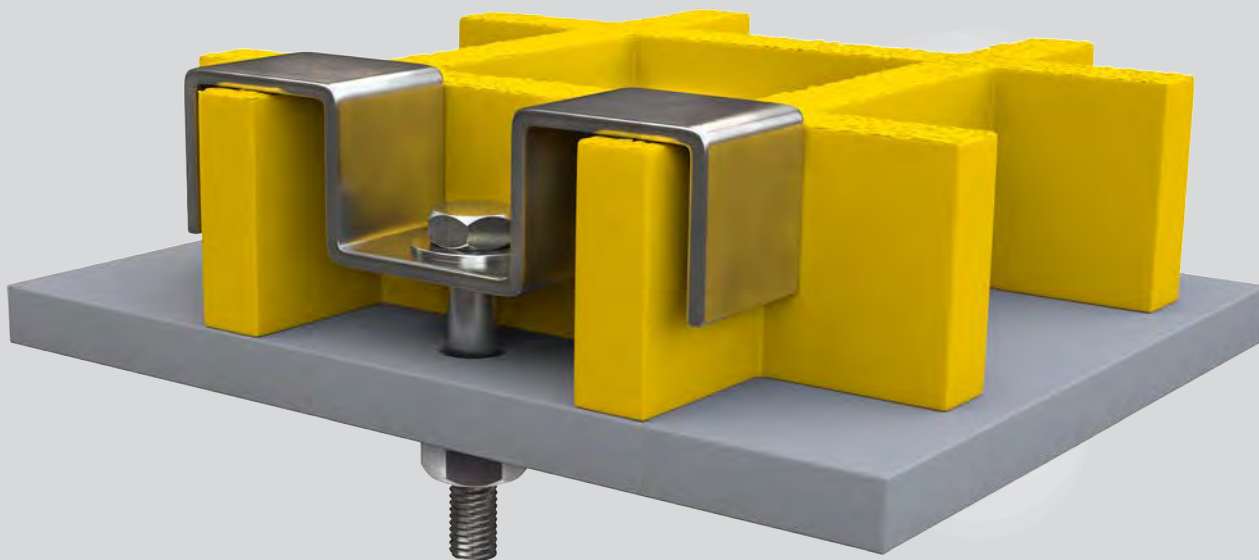


# ***Fibre*GRATING**

Grating Clips



DESIGN

SUPPLY

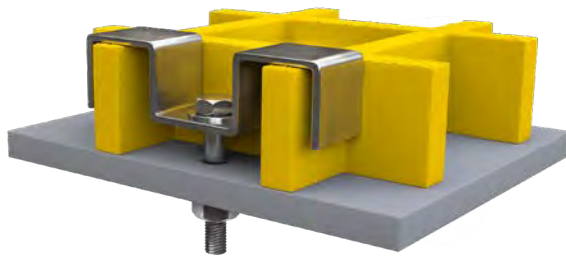
FABRICATE

INSTALL



## GRATING CLIPS

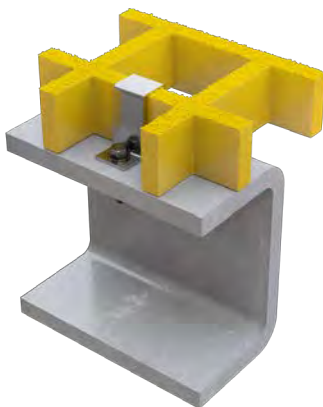
### M-CLIP



<b>Grating</b>	Open Mesh	Pultruded
<b>Depth</b>	25mm / 38mm / 50mm	25mm / 38mm

- Direct fixing to support underneath
- M8 Bolt (length to suit grating depth)
- Bolt recessed to prevent trip hazard
- Compatible with numerous bolt and screw types
- Stainless steel 316

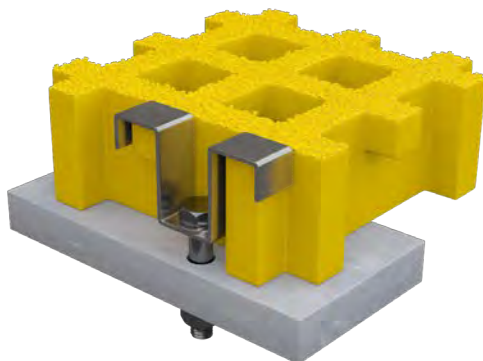
### L-CLIP



<b>Grating</b>	Open Mesh
<b>Depth</b>	25mm / 38mm

- Direct fixing to support underneath
- M6 Bolt (length to suit grating depth)
- Bolt sunken to prevent trip hazard
- Compatible with numerous bolt and screw types
- Stainless steel 316

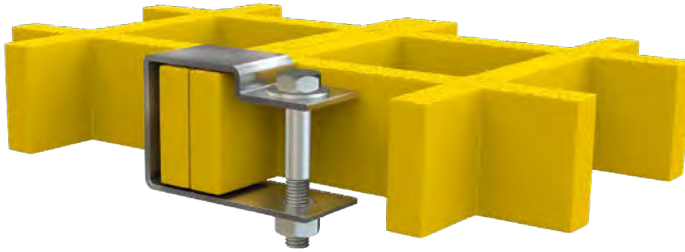
### TWINGRID (MINI MESH) M-CLIP



<b>Grating</b>	TwinGrid / Mini Mesh
<b>Depth</b>	14mm / 30mm / 38mm

- Direct fixing to support underneath
- M6 Bolt (length to suit grating depth)
- Bolt sunken to prevent trip hazard
- Compatible with numerous bolt and screw types
- Stainless steel 316

### C-CLIP

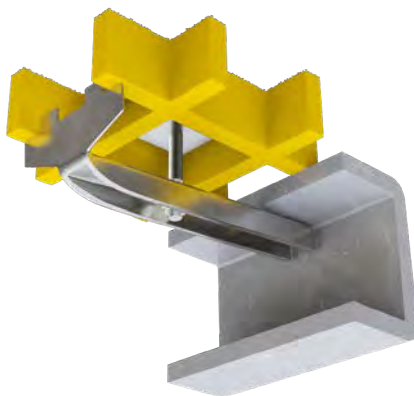


<b>Grating</b>	Open Mesh
<b>Depth</b>	25mm / 38mm / 50mm

- For joining bound edges of 2 panels together
- M6 Bolt with socket head
- Nut fixed in place for easy installation
- Stainless steel 316

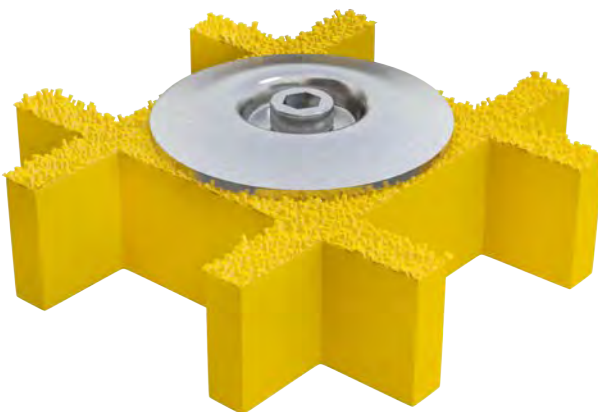
### J CLAMP

<b>Grating</b>	Open Mesh	TwinGrid / Mini Mesh	Solid Top	Pultruded
<b>Depth</b>	25mm / 38mm / 50mm	14mm / 30mm / 38mm	28mm / 41mm / 54mm	25mm / 38mm / 50mm



- For clamping to the underside of supports
- Used where direct fixing through supports are not permitted
- Can be used with most grating top clips
- Does not require tightening from underneath
- M8 & M6 bolt compatible (hex nuts required)
- Stainless steel 316

### GRATING DISC

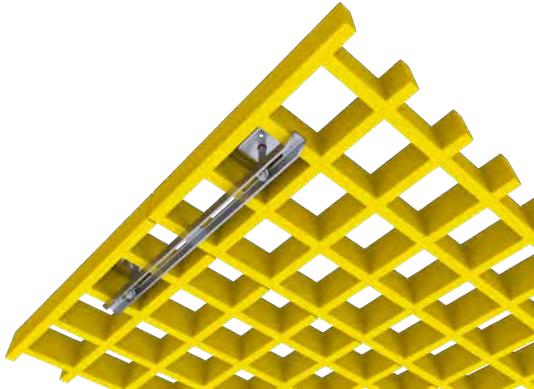


<b>Grating</b>	Open Mesh	Pultruded
<b>Depth</b>	25mm / 38mm	25mm / 38mm / 50mm

- Direct fixing to support underneath
- M6 Bolt (length to suit grating depth)
- Bolt sunken to prevent trip hazard
- Compatible with numerous bolt and screw types
- Stainless steel 316

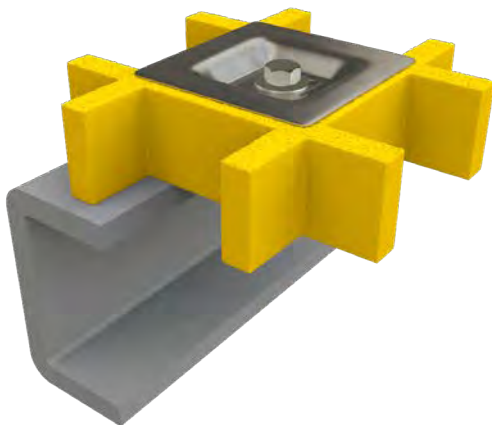
## CHANNEL CLAMP

Grating	Open Mesh	TwinGrid / Mini Mesh	Solid Top	Pultruded
Depth	25mm / 38mm / 50mm	14mm / 30mm / 38mm	28mm / 41mm / 54mm	25mm / 38mm / 50mm



- For joining panels together without 2 bound edges
- Can be used with most grating top clips
- 2 of each clip required
- M8 Bolt (length to suit depth of grating)
- Does not require tightening from underneath
- Stainless steel 316

## SQUARE RECESSED CLIP



Grating	Open Mesh
Depth	25mm / 38mm / 50mm

- Direct fixing to support underneath
- M8 Bolt (length to suit grating depth)
- Bolt recessed to prevent trip hazard
- Compatible with numerous bolt and screw types
- Stainless steel 316

## DOMED FIXING (WLP)



Grating	TwinGrid / Mini Mesh	Solid Top
Depth	14mm / 30mm / 38mm	28mm / 41mm / 54mm

- Direct fixing to support underneath
- M6 Bolt (length to suit grating depth)
- Bolt recessed to prevent trip hazard
- Compatible with numerous bolt and screw types
- Stainless steel 316 or Zinc



**Southern Office:**  
Unit 2, Civic Industrial Estate,  
Homefield Road Central,  
Haverhill,  
Suffolk,  
CB9 8QP



**Northern Office:**  
Kingston House,  
3 Walton Road,  
Pattinson North,  
Washington,  
Tyne & Wear,  
NE38 8QA



**[www.fibregrid.com](http://www.fibregrid.com)**



**Email: [sales@fibregrid.com](mailto:sales@fibregrid.com)**



**Phone: 01440 712722**

