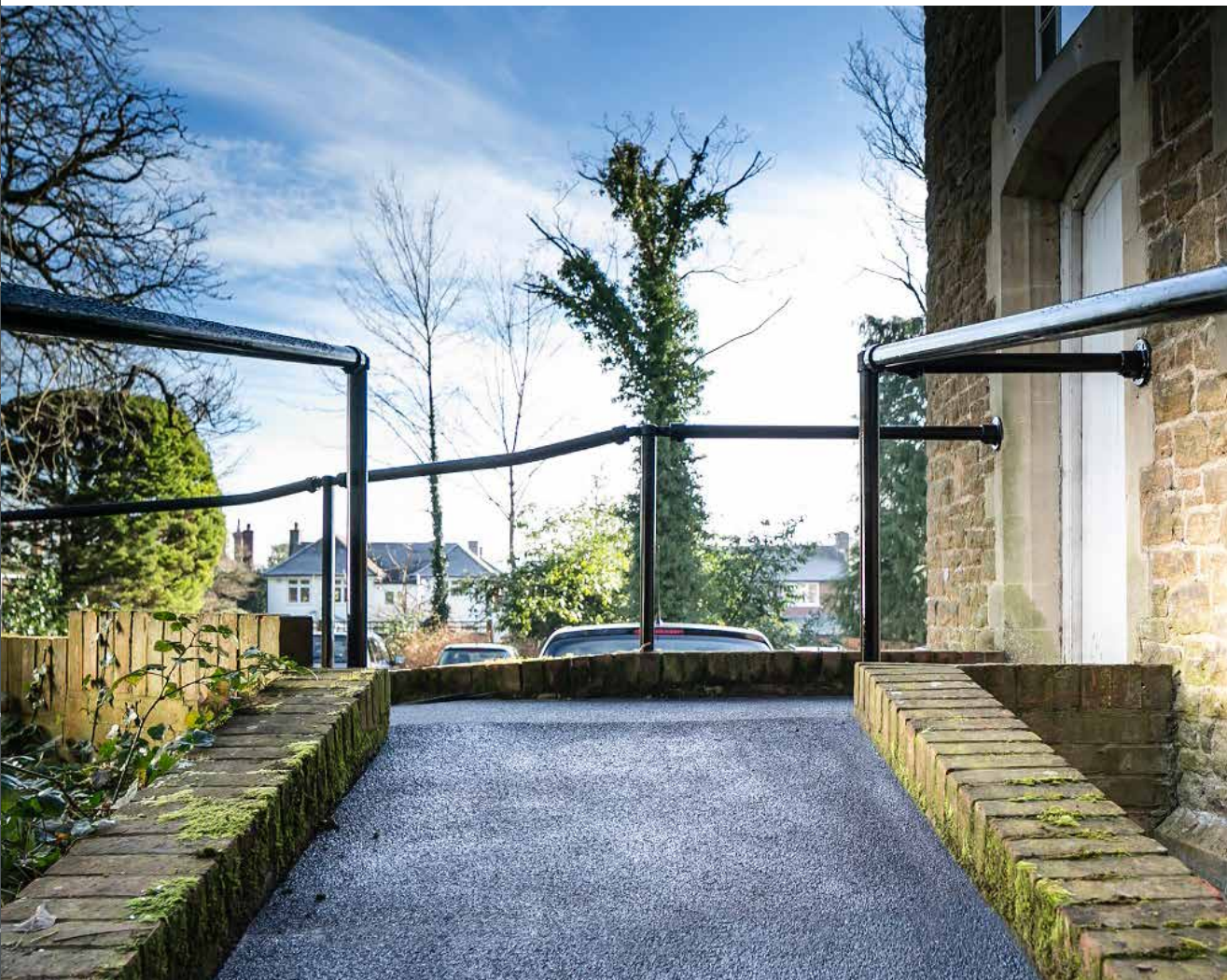


SLIPGrip[®]

Standard GRP Flat sheets



DESIGN

SUPPLY

FABRICATE

INSTALL



Our SlipGrip® Standard GRP Anti Slip Flat Sheets are an affordable and versatile solution for slippery walking surfaces. The tough, chemical resistant surface makes them suitable for both industrial and commercial use.

They can be installed easily and quickly with SlipGrip® GRP Fixing Kits. These flat sheets can also be pre-drilled.

Just call 01440 712722 and advise the technical sales representative of the measurements. They can either be trimmed on site or we can cut them to your exact requirements, free of charge.

SlipGrip® Standard GRP is also available as a stair tread cover and can be installed with SlipGrip® GRP Stair Tread Fixing Kits.

CHARACTERISTICS

- Quick and easy installation - minimal downtime and can be walked on immediately
- Durable and tough chemical resistant surface, making them suitable for both commercial & industrial use
- Easy to clean and replace
- Fire Retardant
- Corrosion resistant
- Chemical resistant
- Lightweight
- Non sparking
- Non metallic

SUITABLE APPLICATIONS

- ✓ Ramps
- ✓ Walkways
- ✓ Mezzanine floors
- ✓ Fire escapes
- ✓ Areas of medium foot traffic

SUITABLE SUBSTRATES

- ✓ Wood
- ✓ Concrete
- ✓ Stone
- ✓ Metal

TECHNICAL DATA

Standard Sheet Sizes:	800mm x 1200mm 1200mm x 1200mm 2400mm x 1200mm
Colours:	Black, Yellow or Stone
Tolerances (including cut):	+/- 3-4mm
Grade:	Coarse
Thickness:	4-5mm with grit
Service temperature:	-20°C to 80°C

SLIP RESISTANCE VALUES

Measured using the Pendulum test method (WF rubber slider) - certificate available on request.

Top Surface	Dry Reading	Wet Reading
Coarse Grit	71	63

To ensure that the above slip resistance levels are maintained, the stair treads should be kept clean.

The UK Slip Resistance Group guide to slip resistance of a floor for able bodied pedestrians:

Four S Pendulum Value	Potential for Slip
Above 65	Extremely Low
35 - 65	Low
25 - 35	Moderate
25 & Below	High

CLEANING GUIDE & TIPS

Use of a stiff brush will usually be sufficient when cleaning SlipGrip® Standard GRP Flat Sheets to remove everyday dirt. For a more stubborn contamination, it is recommended that a mild detergent such as SlipGrip®

Degreaser is used and then rinsed with cold water. It is important to remove any excess water from the Flat Sheets prior to being put back into use with suitable absorbent materials. Where circumstances allow, SlipGrip®

Standard GRP Flat Sheets can be power washed on a low setting. However, repeated use of a pressure washer could undermine the integrity of the adhesive/sealant.

The security of the fixings/adhesive should be checked on a regular basis. Circumstances will vary, based upon the volume of foot traffic etc, but, as a guide, monthly inspections would be advisable

HANDLING & STORAGE

Safe handling practices should always be employed and the appropriate Personal Protection Equipment is to be worn. Store the sheets flat and upside down.



PERSONAL PROTECTION EQUIPMENT

It is recommended that the following Personal Protection Equipment is worn for installation of SlipGrip® GRP Flat Sheets and further protective measures may be necessary but this will depend on the installation environment:

Bonding	Cutting & Mechanical Fixing
<ul style="list-style-type: none"> ✓ Eye Goggles ✓ Protective Gloves ✓ Safety Boots 	<ul style="list-style-type: none"> ✓ Eye Goggles ✓ Protective Gloves ✓ Safety Boots ✓ Ear Defenders ✓ Dust mask (available from FibreGrid)



CUTTING

SlipGrip® Standard GRP Anti Slip Flat Sheets can be cut to size using orbital cutting equipment with a diamond blade. Cutting should be carried out externally or where there is dust extraction or suitable ventilation and the appropriate protective equipment as detailed above should be worn. A jigsaw can be used for trimming or for occasions where only a small amount of cutting is required.



CUT TO SIZE SERVICE

FibreGrid offers a free cut to size service for all SlipGrip® products except SlipGrip® Precision. When you place your order, inform the technical advisor that you intend to install the product yourself and they will tailor the order to meet your requirements.

PRE-DRILLING

SlipGrip® Anti Slip Flat Sheets can also be predrilled. Just call 01440 712722 and advise the technical sales representative with the measurements.

The above installation instructions are to be used as a guide. Always employ safe practices. It is recommended to first test the suitability of any fixing method on a small area before carrying out a full installation programme.

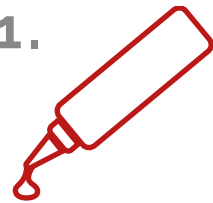

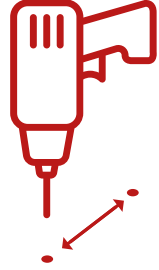
PREPARATION

- ✓ Ensure that the area is clean, dry and free from loose and friable material. Any "dished" or damaged surface areas should be patch repaired to provide a reasonably flat and consistent surface.
- ✓ Dry fit all SlipGrip® panels to ensure they fit freely and that they sit flat down on the surface.
- ✓ If required, SlipGrip® Flat Sheets can be trimmed on site to suit, ideally using a skill saw with a 4mm diamond blade or an angle grinder with a 1mm blade.
- ✓ Please ensure that goggles and gloves are worn at all times when any form of cutting is involved.



These installation instructions are to be used as a guide. Always employ safe practices. It is recommended to first test the suitability of any fixing method on a small area before carrying out a full installation programme.

APPLICATION

<p>1.</p> 	<p>Apply an approx. 6mm bead (this may need to be increased dependant on the substrate conditions) of the high strength gap filling adhesive around the periphery of the underside of the SlipGrip® panels approx. 25mm in from the edges. Then, starting from the bottom left corner come up at an angle (approx. 200mm across) and then down at an angle, to create a 'peak and a trough', repeat this until you reach the end.</p>
<p>2.</p> 	<p>Immediately press the panel firmly to the substrate to ensure adequate transfer of adhesive (depending on the size of the bead, this will elevate the sheet by approximately 1-1.5mm). A firm bond will be achieved in about one hour under normal circumstances and conditions.</p>
<p>3.</p> 	<p>Drill holes 50mm in from all edges at no more than 300mm apart from the centres. Depending on the width of the panels it may be necessary to provide fixing points at 600mm centres down the middle of the panels. As substrates vary considerably, additional fixings may be required to fix the panels down. If fixing down two pieces of flat sheet that is constrained by sides (i.e. a ramp with wall on either side) a 5mm expansion gap should be considered between the two or more sheets. This gap can be filled with a standard high modulus mastic.</p>

MECHANICAL FIXING

SlipGrip® Anti Slip Flat Sheets can be drilled and secured with stainless steel screws. It is recommended to use the Flooring Sheet Fixing Kit available from FibreGrid. Follow the preparation procedure prior to fixing:

1. Always ensure that the screw length is slightly longer than the plug length to obtain a good fixing if not using the FibreGrid Flooring Sheet Fixing Kit.
2. Use Mastic Adhesive on the underside to prevent the GRP drumming and rocking on the substrate.
3. Fixing is generally recommended at approximately: 70mm from the front, 50mm from each side, 60mm from the back, at a maximum of 250mm apart.
4. If fitting to a metal substrate, use self-tapping screws. There is no need to counter sink the screw holes since the screw can be tightened so that it beds into the gritted surface, making it flush with the wearing surface



Southern Office:
Unit 2, Civic Industrial Estate,
Homefield Road Central,
Haverhill,
Suffolk,
CB9 8QP



Northern Office:
Kingston House,
3 Walton Road,
Pattinson North,
Washington,
Tyne & Wear,
NE38 8QA



www.fibregrid.com



Email: sales@fibregrid.com



Phone: 01440 712722



001