

SlipGrip® Riser Plates



Product Description

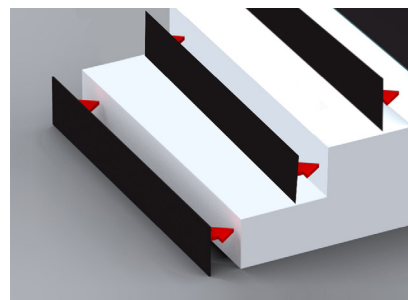
The addition of our SlipGrip® Riser Plates means that not only is the whole tread covered but the riser is completely covered offering a visually enhanced appearance.

The Riser Plates are made from Fibreglass materials so will not rot, twist or warp. The front surface has a smooth finish.



Product Characteristics

- Fully covers existing riser substrates
- Visually transforms existing staircase
- Constructed from high strength Fibreglass
- Maintenance free
- Quick and easy installation
- Choice of widths
- Easily combines with our Heavy Duty Stair Tread Covers



Suitable Applications

Fire escapes, all staircases, and areas of heavy foot traffic.



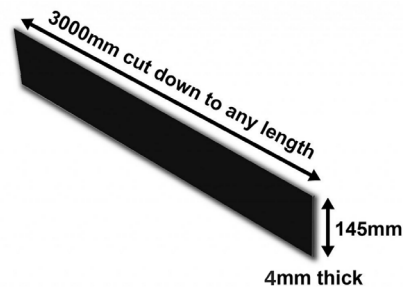
Suitable Substrates

Wood, concrete, stone and metal.

SlipGrip® Riser Plates

Technical Data

SlipGrip® Riser Plates are available as 145mm high, 4mm thick and up to 3000mm long. The Riser Plates can be cut to the required step width.



Preparation

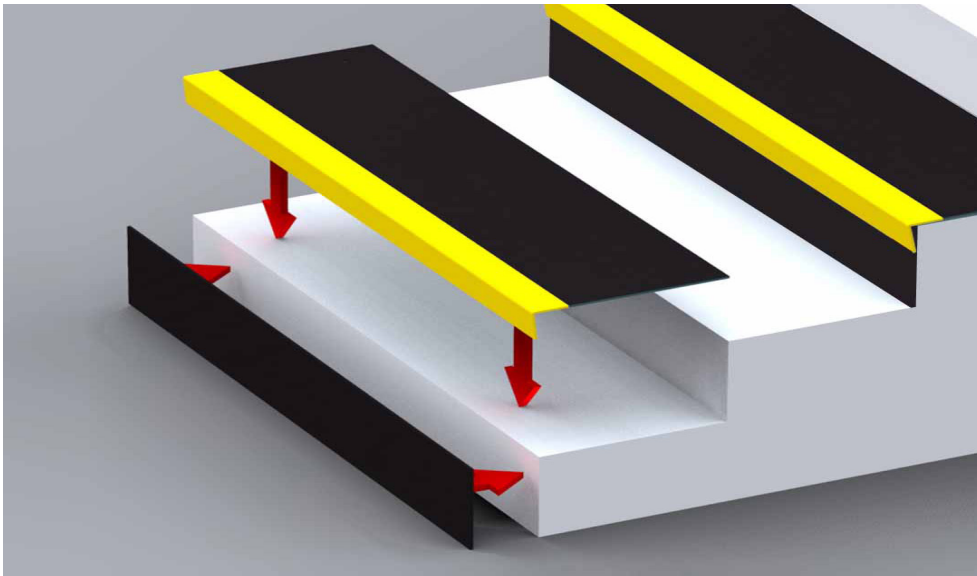
Ensure that the areas to have SlipGrip® fitted are clean, dry and free from loose and friable material. Any "dished" or damaged surface areas should be patch repaired to provide a reasonably flat and consistent surface.

Dry fit all SlipGrip® panels to ensure they fit freely and that they sit flat down on the surface. If required, SlipGrip® can be trimmed on site to suit, ideally using a skill saw with a 4mm diamond blade or an angle grinder with a 1mm blade.

Please ensure that goggles and gloves are worn at all times when any form of cutting is involved.

Application

If you are using Riser Plates, these should be fitted before any of the stair treads. Using high strength gap filling adhesive in the same method as applying stair treads. Push these onto the riser as far down as they will go. When SlipGrip® Stair Treads are fitted these will hold the Riser Plates in position.



Unit 2, Civic Industrial Estate, Homefield Road Central, Haverhill, Suffolk, CB9 8QP

Online: www.fibregrid.com
Email: sales@fibregrid.com
Phone: 01440 712722
Fax: 01440 712733

