



FIBREGRID

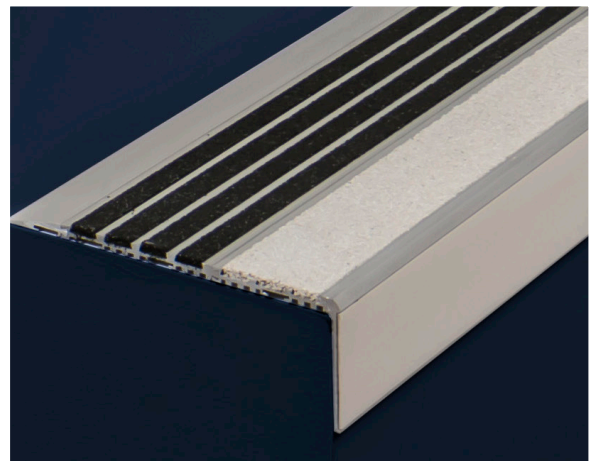
SlipGrip® Precision Stair Tread Covers



Product Description

SlipGrip® Precision is an aluminium stair tread cover ideal for environments with heavy footfall requiring a stylish and modern anti slip stair tread solution. This premium step cover combines aluminium with anti slip resin inserts. Drilling with mechanical fixing is recommended with SlipGrip® Precision.

They can be installed easily and quickly with SlipGrip® GRP Stair Tread Cover Fixing Kits. These stair tread covers can also be pre-drilled. Just call 01440 712722 and advise the technical sales representative with the measurements.



Product Characteristics

- 15 Year guarantee
- 55mm DDA compliant nosing
- Available with yellow or white nosing and inserts
- Safe, smart and contemporary look
- Internal and External use
- Chemical resistant wearing surface
- Heavy footfall



Suitable Applications

Fire escapes, all staircases, night clubs, stadiums, theme parks, areas of extreme foot traffic that require a less industrial look.



Suitable Substrates

Wood, concrete, stone and metal.

SlipGrip® Precision Stair Tread Covers



Technical Data

| | |
|------------------------------------|---|
| Standard lengths for stair treads: | 1000mm 1500mm |
| Stair treads profile: | 200mm |
| Cut to size service: | No |
| Colour for stair treads: | Black with Yellow Nosing Black with White Nosing |
| Grade: | Medium |
| Thickness: | 8.5mm |
| Service temperature: | N/A |
| Fire retardant: | No |
| Impact resistant: | Yes |

| | |
|----------------------|---|
| Corrosion resistant: | No |
| Chemical resistant: | No |
| Lightweight: | No |
| Non sparking: | No |
| Non metallic: | No |
| Fixing: | Please refer to the SlipGrip® installation guide full details |



Slip Resistance Test Results

SlipGrip® Heavy Duty GRP slip resistance levels measured using the Pendulum Test method (WF rubber slider) – certificate available on request:

| Top Surface | Dry Reading | Wet Reading |
|-------------|-------------|-------------|
| Medium grit | 73 | 69 |

The UK Slip Resistance Group guide to slip resistance of a floor for able bodied pedestrians:

| Four S Pendulum Value | Potential for Slip |
|-----------------------|--------------------|
| Above 65 | Extremely Low |
| 35 to 65 | Low |
| 25 to 35 | Moderate |
| 25 and Below | High |

To ensure that the above slip resistant levels are maintained the panels should be kept clean in accordance with the information below.



Cleaning and Maintenance

Use of a stiff brush will usually be sufficient when cleaning SlipGrip® Precision to remove everyday dirt. For more stubborn items, it is recommended that a mild detergent such as SlipGrip® Degreaser is used and then rinsed with cold water. It is important to remove any excess water from the stair treads prior to being put back into use with suitable absorbent materials. Where circumstances allow, SlipGrip® Precision can be power washed on a low setting. If SlipGrip® Precision has been sealed with a sealant, repeated use of a pressure washer could undermine the integrity of the sealant.

The security of the fixings should be checked on a regular basis. Circumstances will vary, based upon the volume of foot traffic etc, but, as a guide, monthly inspections would be advisable.



Handling & Storage

Safe handling practices should always be employed and the appropriate Personal Protection Equipment is to be worn. Store the stair treads flat and upside down.



Personal Protection Equipment

It is recommended that the following Personal Protection Equipment is worn for installation of SlipGrip® GRP stair treads and further protective measures may be necessary but this will depend on the installation environment:

| Bonding | Cutting & Mechanical Fixing |
|--|---|
| <ul style="list-style-type: none">• Eye Goggles• Protective Gloves• Safety Boots | <ul style="list-style-type: none">• Ear Defenders• Eye Goggles• Dust Mask (available from FibreGrid)• Protective Gloves• Safety Boots |

SlipGrip® Precision Stair Tread Covers



Preparation

Ensure that the area is clean, dry and free from loose and friable material. Any “dished” or damaged surface areas should be patch repaired to provide a reasonably flat and consistent surface. You can patch repair concrete with our SlipGrip Step Edge Repair.

Dry fit stair tread covers to ensure they fit freely and that they sit flat down on the surface.



Application

Apply an approx. 6mm bead (this may need to be increased dependant on the substrate conditions) of the high strength gap filling adhesive around the periphery of the underside of the stair tread covers approx. 25mm in from the edges. Then, starting from the bottom left corner come up at an angle (approx. 200mm across) and then down at an angle, to create a ‘peak and a trough’, repeat this until you reach the end.

Immediately press the panel firmly to the substrate to ensure adequate transfer of adhesive (depending on the size of the bead, this will elevate the sheet by approximately 1-1.5mm). A firm bond will be achieved in about one hour under normal circumstances and conditions.

Drill two holes on each side of the SlipGrip stair tread cover, the first approximately 60mm in from the back edge and 50mm from the side. The second one should again be approximately 50mm from the side and approx. 60mm back from the contrasting nosing (55mm) For larger treads, it may be necessary to have further fixing points in the centre of the tread.



Mechanical fixing

SlipGrip® Anti Slip Stair Tread Covers can be drilled and secured with stainless steel screws. It is recommended to use the Stair Tread Fixing Kit available from FibreGrid. Follow the preparation procedure prior to fixing:

1. Always ensure that the screw length is slightly longer than the plug length to obtain a good fixing if not using the FibreGrid Stair Tread Fixing Kit.
2. Use Mastic Adhesive on the underside to prevent the GRP drumming and rocking on the substrate.
3. Fixing is generally recommended at approximately: 70mm from the front, 50mm from each side, 60mm from the back, at a maximum of 250mm apart.
4. If fitting to a metal substrate, use self-tapping screws. There is no need to counter sink the screw holes since the screw can be tightened so that it beds into the gritted surface, making it flush with the wearing surface.

Predrilling

SlipGrip® Anti Slip Stair Tread Covers can also be predrilled. Just call 01440 712722 and advise the technical sales representative with the measurements.

The above installation instructions are to be used as a guide. Always employ safe practices. It is recommended to first test the suitability of any fixing method on a small area before carrying out a full installation programme.

Unit 2, Civic Industrial Estate, Homefield Road Central, Haverhill, Suffolk, CB9 8QP

Online: www.fibregrid.com

Email: sales@fibregrid.com

Phone: 01440 712722

Fax: 01440 712733



FIBREGRID