

SlipGrip® Landing Covers



Product Description

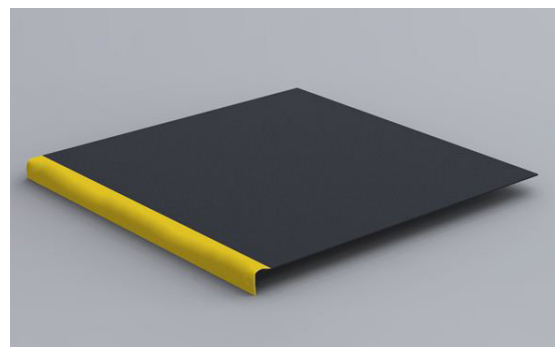
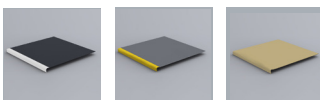
Make landings, walkways, balconies and similar anti slip with these easy to install landing covers. They also perfectly complement SlipGrip® Stair Tread Covers.

Like the Stair Treads, the Landing Covers are made from Fibreglass materials so will not rot, twist or warp. The nosing can accommodate our Riser Plates.



Product Characteristics

- Fully covers existing substrates
- Visually transforms existing staircase
- Constructed from high strength fibreglass
- Maintenance free
- Quick and easy installation
- Choice of widths
- Easily combines with Stair Tread Covers and Flat Sheets
- Available in a range of colours



Suitable Applications

Fire escapes, all staircases, and areas of heavy foot traffic.



Suitable Substrates

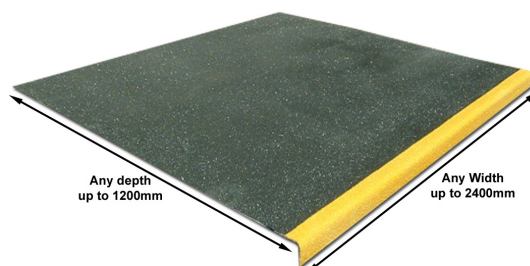
Wood, concrete, stone and metal.

SlipGrip® Landing Covers



Technical Data

SlipGrip® Landing Covers are available up to a depth of 1200mm, 4mm thick and up to 2400mm wide. The Landing Covers can be cut to the required step width.



Preparation

Ensure that the areas to have SlipGrip® fitted are clean, dry and free from loose and friable material. Any “dished” or damaged surface areas should be patch repaired to provide a reasonably flat and consistent surface.

Dry fit all SlipGrip® panels to ensure they fit freely and that they sit flat down on the surface. If required, SlipGrip® can be trimmed on site to suit, ideally using a skill saw with a 4mm diamond blade or an angle grinder with a 1mm blade.

Please ensure that goggles and gloves are worn at all times when any form of cutting is involved.



Application

Apply an approx. 6mm bead (this may need to be increased dependant on the substrate conditions) of the high strength gap filling adhesive around the periphery of the underside of the SlipGrip® panels approx. 25mm in from the edges. Then, starting from the bottom left corner come up at an angle (approx. 200mm across) and then down at an angle, to create a ‘peak and a trough’, repeat this until you reach the end (similar to the diagram below). Immediately press the panel firmly to the substrate to ensure adequate transfer of adhesive (depending on the size of the bead, this will elevate the sheet by approximately 1-1.5mm). A firm bond will be achieved in about one hour under normal circumstances and conditions. Secure with mechanical fixings, as below.

The front edge fixings points should be approximately 15mm in from the side and in line with the contrasting nosing (55mm). The remaining fixing points should be 15mm in from the edges and no more than 300mm apart from the centres. As substrates vary considerably, additional fixings may be required to fix the panels down.

Unit 2, Civic Industrial Estate, Homefield Road Central, Haverhill, Suffolk, CB9 8QP

Online: www.fibregrid.com

Email: sales@fibregrid.com

Phone: 01440 712722

Fax: 01440 712733



FIBREGRID